

Stain Touch-Up Instructions

Materials Supplied by MasterGrain:

- 1) 2oz bottle of touch-up stain material with brush lid
- 2) 2oz bottle of topcoat material with brush lid

Materials Required:

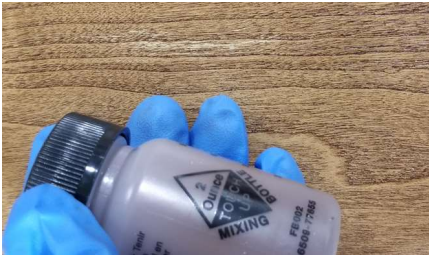
- 1) Lint free cloth

Environmental Considerations:

- 1) The object being painted must be dry and protected from exposure to any water
- 2) It must be warmer than 10°C
- 3) Drying times will increase as temperature and humidity increase

Recommended Touch-Up Instructions:

- 1) Gently wipe the damaged area with a dry cloth to remove any contaminants.
- 2) Shake the stain bottle well so that the material is properly mixed.



- 3) Unscrew the lid and use the attached brush to apply a light amount of stain to only the damaged area. Use the minimal amount of stain as possible to completely cover the damage, too much stain could result in an obvious dark spot.



- 4) Use the lint free cloth to gently wipe the wet stain within the damage. Do this until the colour in the damaged area matches the rest of the door system. Make sure to wipe the undamaged area well to ensure the area does not darken too much.

THE PERFECT BLEND OF **MODERN & TRADITIONAL** FIBERGLASS DOORS





- 5) Leave the repair to dry for at least **two hours** and check the colour match afterwards. If the repair is too light, more stain can be applied until the repair is acceptable.
- 6) Shake the bottle of topcoat well before use.



- 7) Unscrew the lid and use the attached brush to apply topcoat to only the repaired area with fresh stain. Make sure the brush strokes are even and consistent to reduce the visibility of the repair.



- 8) Let dry for **an hour** and inspect the resulting repair.



Touch-Up Material Storage:

- 1) After use, tightly screw the lids back on the bottles to ensure no air gets in.
- 2) Store the containers at room temperature. Do not allow the product to freeze.
- 3) The touch-up glaze has a shelf life of 3 months and the topcoat has a shelf life of 3 months.

THE PERFECT BLEND OF **MODERN & TRADITIONAL** FIBERGLASS DOORS

